

ORIGINAL ARTICLE

CPR with Chest Compression Alone or with Rescue Breathing

Thomas D. Rea, M.D., Carol Fahrenbruch, M.S.P.H., Linda Culley, B.A.,
Rachael T. Donohoe, Ph.D., Cindy Hambly, E.M.T., Jennifer Innes, B.A.,
Megan Bloomingdale, E.M.T., Cleo Subido, Steven Romines, M.S.P.H.,
and Mickey S. Eisenberg, M.D., Ph.D.

ABSTRACT

BACKGROUND

The role of rescue breathing in cardiopulmonary resuscitation (CPR) performed by a layperson is uncertain. We hypothesized that the dispatcher instructions to bystanders to provide chest compression alone would result in improved survival as compared with instructions to provide chest compression plus rescue breathing.

METHODS

We conducted a multicenter, randomized trial of dispatcher instructions to bystanders for performing CPR. The patients were persons 18 years of age or older with out-of-hospital cardiac arrest for whom dispatchers initiated CPR instruction to bystanders. Patients were randomly assigned to receive chest compression alone or chest compression plus rescue breathing. The primary outcome was survival to hospital discharge. Secondary outcomes included a favorable neurologic outcome at discharge.

RESULTS

Of the 1941 patients who met the inclusion criteria, 981 were randomly assigned to receive chest compression alone and 960 to receive chest compression plus rescue breathing. We observed no significant difference between the two groups in the proportion of patients who survived to hospital discharge (12.5% with chest compression alone and 11.0% with chest compression plus rescue breathing, $P=0.31$) or in the proportion who survived with a favorable neurologic outcome in the two sites that assessed this secondary outcome (14.4% and 11.5%, respectively; $P=0.13$). Prespecified subgroup analyses showed a trend toward a higher proportion of patients surviving to hospital discharge with chest compression alone as compared with chest compression plus rescue breathing for patients with a cardiac cause of arrest (15.5% vs. 12.3%, $P=0.09$) and for those with shockable rhythms (31.9% vs. 25.7%, $P=0.09$).

CONCLUSIONS

Dispatcher instruction consisting of chest compression alone did not increase the survival rate overall, although there was a trend toward better outcomes in key clinical subgroups. The results support a strategy for CPR performed by laypersons that emphasizes chest compression and minimizes the role of rescue breathing. (Funded in part by the Laerdal Foundation for Acute Medicine and the Medic One Foundation; ClinicalTrials.gov number, NCT00219687.)

From the Emergency Medical Services Division of Public Health for Seattle and King County (T.D.R., C.F., L.C., M.B., C.S., M.S.E.) and the University of Washington (T.D.R., M.S.E.) — both in Seattle; the London Ambulance Service, London (R.T.D., J.I.); and Thurston County Medic One, Olympia, Washington (C.H., S.R.). Address reprint requests to Dr. Rea at 401 5th Ave., Suite 1200, Seattle, WA 98104, or at rea123@u.washington.edu.

N Engl J Med 2010;363:423-33.

Copyright © 2010 Massachusetts Medical Society.

OUT-OF-HOSPITAL CARDIAC ARREST claims hundreds of thousands of lives each year worldwide.^{1,2} Successful resuscitation is challenging but achievable, requiring an interdependent set of actions that consist of early arrest recognition, early cardiopulmonary resuscitation (CPR), early defibrillation, expert advanced life support, and timely postresuscitation care.³

Early initiation of CPR by a layperson can increase the patient's chances of surviving and having a favorable long-term neurologic recovery.^{4,5} CPR performed by a layperson has traditionally consisted of chest compressions interspersed with rescue breathing, which allows some measure of both circulation and oxygenation.⁶ Interest in CPR that focuses on chest compressions and minimizes or eliminates rescue breathing is increasing.⁷ Chest compression alone may be more acceptable to some laypersons and has the potential physiological advantage of fewer compression interruptions, so that circulation is increased, as compared with traditional CPR, although at a possible cost to oxygenation.^{8,9}

Studies in animal models that involve a primary cardiac cause of arrest and simulate challenges to laypersons performing CPR have shown increased circulation and improved survival with chest compression alone.^{10,11} In contrast, results in animal models of arrest due to respiratory causes suggest that chest compression plus rescue breathing may be more beneficial.¹²

Cardiac arrest in humans is a heterogeneous condition. Although a primary cardiac cause is the most common mechanism of arrest, respiratory and mixed mechanisms are important contributing factors.¹³⁻¹⁵ The pathophysiology of each arrest is dynamic, and the relative importance of oxygenation may depend on the time-dependent phase of the arrest.¹⁶ In observational studies of bystander-initiated CPR, the two CPR approaches led to similar survival rates, although interpretation of these findings is limited by potential confounding.^{14,15,17} In the only randomized trial comparing these two types of bystander CPR, there was no significant difference in survival between the two groups, although the observed survival difference between patients randomly assigned to chest compression alone and those randomly assigned to compression plus rescue breathing (14.6% vs. 10.4%) is clinically rel-

Figure 1 (facing page). Enrollment, CPR Status, and Eligibility.

ALS denotes advanced life support, CPR cardiopulmonary resuscitation, DNR do not resuscitate, and EMS emergency medical services.

evant.¹⁸ This trial was conducted in a community with a very quick response by emergency medical services (EMS), and the study's main analysis was restricted to patients with a primary cardiac cause of arrest — characteristics that potentially favor the physiological effects of chest compression alone.

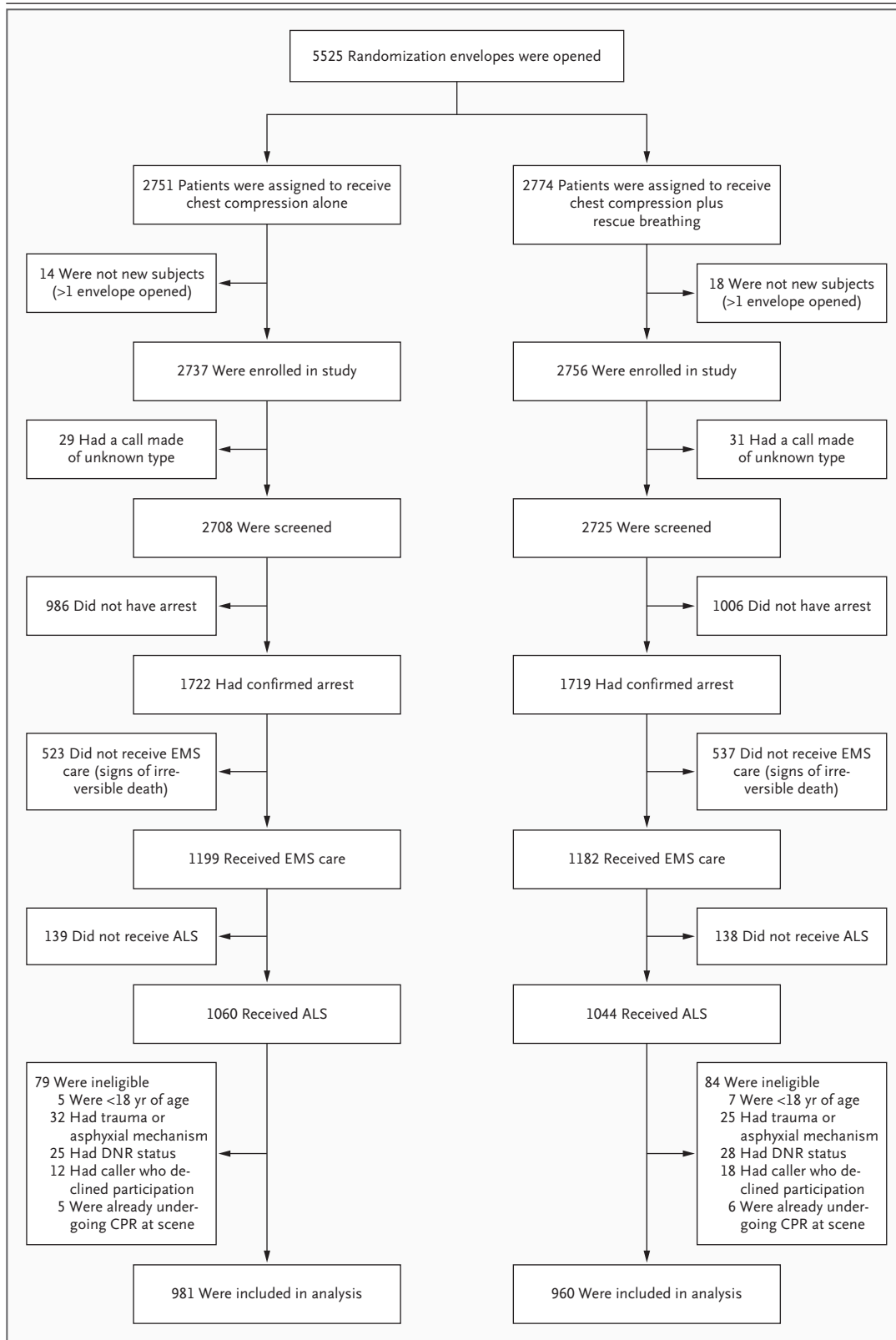
To help determine the best approach to bystander CPR, we undertook a randomized trial of dispatcher-assisted CPR to compare outcomes when instructions consisted of chest compression alone with outcomes when instructions consisted of chest compression plus rescue breathing. We hypothesized that instruction consisting of chest compression alone would result in higher survival rates than instruction consisting of chest compression plus rescue breathing.

METHODS

STUDY DESIGN, POPULATION, AND SETTING

The Dispatcher-Assisted Resuscitation Trial (DART) was a randomized trial of dispatcher-assisted CPR instruction. The study was approved by the appropriate review boards, and patients were enrolled without consent being obtained, although survivors were later informed that they had been enrolled in a clinical investigation of CPR.

The study considered consecutive calls by bystanders to the 911 system for patients in cardiac arrest. Patients were initially eligible if the dispatcher determined that they were unconscious and not breathing normally and that bystander CPR was not under way. If the caller was willing to undertake CPR with the dispatcher's assistance, a randomization envelope containing CPR instructions was opened. Dispatchers attempted to exclude patients with arrest due to trauma, drowning, or asphyxiation (from choking, strangulation, or suffocation), as well as patients who were under 18 years of age; and those who had do-not-resuscitate status or were already receiving CPR. Final eligibility required postrandomization exclusion and was restricted to patients who received basic and advanced arrest care from EMS



personnel. Thus, we excluded persons who were unconscious and not breathing normally but who were deemed not to be in arrest and persons who had had a confirmed arrest but were found to have signs of irreversible death, in which case EMS personnel did not attempt resuscitation.¹⁹

King County EMS (in Washington State), Thurston County EMS (in Washington State), and London Ambulance Service (in England) participated in the trial. At all three sites, callers use a common emergency number to speak with civilian employee dispatchers. King and Thurston Counties are served by a two-tiered EMS system in which personnel follow the core resuscitation strategy detailed by the American Heart Association guidelines. London is served by a single-tier EMS system in which personnel follow the United Kingdom Resuscitation Council Guidelines. Because of differences in enrollment rates and time required for review processes, enrollment took place from June 1, 2004, through April 15, 2009, in King County; from June 1, 2005, through April 15, 2009, in Thurston County; and from January 1, 2005, through March 15, 2008, in London.

INTERVENTION

On determining patients' initial eligibility, dispatchers enrolled and randomly assigned each patient to one of the two CPR strategies by opening an opaque, sequentially numbered envelope to determine which instructions to give the bystander. Randomization was stratified by dispatch center and blocked in sets of 10. The bystander was then instructed to perform either chest compressions alone, providing 50 consecutive compressions (one cycle), or chest compressions plus rescue breathing, with 2 initial rescue breaths followed by 15 chest compressions and subsequent cycles continuing the pattern in a ratio of 2 to 15 (see Fig. 1 in the Supplementary Appendix, available with the full text of this article at NEJM.org). With the dispatcher still on the telephone, the bystander then performed one cycle of CPR during which the dispatcher asked the bystander to count the chest compressions out loud. After the first cycle, the dispatcher could inquire about signs of life and, if warranted, encourage the bystander to continue CPR.

OUTCOMES

The primary outcome was survival to hospital discharge. Secondary outcomes were a return of spontaneous circulation at the end of EMS care

and a favorable neurologic status at the time of hospital discharge, defined as a Cerebral Performance Category (CPC) of 1 or 2. (There are five CPC categories; category 1 represents good cerebral performance, 2 moderate cerebral disability, 3 severe cerebral disability, 4 coma or vegetative state, and 5 death.^{20,21})

DATA COLLECTION AND DEFINITIONS

Dispatch, EMS, and hospital information was reviewed with the use of a uniform data-abstraction form.²¹ The review of EMS and hospital information was done without knowledge of patients' randomization status. Step-by-step progress in the provision of instructions and the initiation of chest compressions by the bystander was determined by a review of the dispatch audiotape.

STATISTICAL ANALYSIS

The trial was designed to detect an absolute difference of 3.5 percentage points in the survival rates between the two study groups, with the use of a two-sided alpha level of 0.05 and a power of 80%. To compare the distribution of characteristics and outcomes for the two types of CPR instruction, we used the chi-square statistic for categorical variables and the independent-samples t-test or the nonparametric Mann-Whitney U test for continuous variables. Primary comparisons were performed according to randomization status. We also performed an efficacy analysis restricted to cases in which bystander CPR progressed to chest compression as a consequence of dispatcher instructions. Because one site was unable to assess neurologic status at discharge, we present the overall results as well as results restricted to the two sites that were able to ascertain neurologic status.

We conducted four prespecified subgroup analyses designed to examine the physiological mechanisms of the intervention as well as to provide a context for interpreting the results in relation to other investigations. The subgroup analyses stratified outcomes according to the underlying cause of arrest, presenting arrest rhythm, witness status, and EMS response interval among witnessed arrests (≤ 6 minutes vs. > 6 minutes). No other subgroup analyses were performed. We used the Breslow-Day test for homogeneity to determine whether the intervention differed according to subgroup status. Statistical analyses were completed with the use of SPSS software, version 18.0 (SPSS).

Table 1. Characteristics of the Patients According to Dispatcher's CPR Instructions.*

Characteristic	Chest Compression Alone (N=981)	Chest Compression plus Rescue Breathing (N=960)	P Value
Site — no. of patients (%)			0.26
King County	588 (59.9)	552 (57.5)	
London	328 (33.4)	327 (34.1)	
Thurston County	65 (6.6)	81 (8.4)	
Age — yr	63.4±16.5	63.9±16.3	0.46
Male sex — no. of patients (%)	659 (67.2)	613 (63.9)	0.12
Cause of arrest — no. of patients (%)			0.63
Cardiac	700 (71.4)	709 (73.9)	
Respiratory	75 (7.6)	59 (6.1)	
Overdose	74 (7.5)	59 (6.1)	
Neurologic	18 (1.8)	15 (1.6)	
Other	114 (11.6)	118 (12.3)	
Arrest witnessed — no. of patients (%)	418 (42.6)	437 (45.5)	0.23
Location — no. of patients (%)			0.34
Residential location	845 (86.1)	837 (87.2)	
Public location	94 (9.6)	86 (9.0)	
Nursing home	41 (4.2)	34 (3.5)	
Time to initial EMS response — min	6.5±2.8	6.7±3.1	0.18
Time to advanced support — min	9.8±6.0	10.0±6.2	0.46
Shockable rhythm — no. of patients (%)	319 (32.5)	304 (31.7)	0.69

* Plus-minus values are means ±SD. CPR denotes cardiopulmonary resuscitation, and EMS emergency medical services.

The study was conducted according to the protocol. The funding organizations did not have a role in the study design, conduct of the study, or interpretation of the results.

RESULTS

PATIENTS, ARRESTS, AND PROGRESSION OF CPR INSTRUCTIONS

During the course of the trial, 5525 randomization envelopes were opened for patients presumed to be in cardiac arrest. Of these patients, 1941 (35%) met the inclusion criteria (Fig. 1). The two most common reasons for exclusion were that EMS personnel found the patient to be alive without arrest or to have signs of irreversible death (in which case resuscitation by EMS was not attempted). The distribution of exclusions in the two groups was similar according to randomization status.

Among the 1941 eligible patients, approximately 70% had arrests with a cardiac cause, less than half the arrests were witnessed, and nearly a third had a shockable rhythm. The average EMS response time from dispatch to arrival at the scene was 6.5 minutes. Patients, circumstance, EMS response, and presenting rhythm characteristics were similar in the two groups (Table 1). Patients randomly assigned to instructions for the bystander to perform chest compression alone were more likely to undergo bystander-performed chest compression (80.5% vs. 72.7%, $P<0.001$) (Table 2).

SURVIVAL TO DISCHARGE

Survival to hospital discharge could not be ascertained for seven subjects (0.4%), three randomly assigned to chest compression alone and four to chest compression plus rescue breathing. We ob-

Table 2. Progression of Bystander-Initiated CPR According to Dispatcher's Instructions.*

Furthest Step Taken in DART Instruction Protocol†	Chest Compression Alone (N=981)	Chest Compression plus Rescue Breathing (N=960)	Total (N=1941)
	<i>number of patients (percent)</i>		
Envelope opened, only preinstructions provided	143 (14.6)	127 (13.2)	270 (13.9)
Rescue-breathing instruction provided, but no rescue breathing performed	1 (0.1)	46 (4.8)	47 (2.4)
Rescue-breathing instruction provided, only rescue breathing performed	0	49 (5.1)	49 (2.5)
Compression instruction provided, but no compressions performed	30 (3.1)	24 (2.5)	54 (2.8)
Compression instruction provided, compressions performed	790 (80.5)	698 (72.7)	1488 (76.7)
Missing data	17 (1.7)	16 (1.7)	33 (1.7)

* Overall crossover between the assigned instructions occurred in 42 of 1941 cases (2.2%). Crossover from chest compression plus rescue breathing to chest compression alone was more common than was crossover from chest compression alone to chest compression plus rescue breathing (3.5% [34 of 960] vs. 0.8% [8 of 981]). CPR denotes cardiopulmonary resuscitation, and DART Dispatcher-Assisted Resuscitation Trial.

† Each category is exclusive. Classification was determined by audio review of the emergency call. If instruction was given but the reviewer was unable to determine whether the maneuver was actually performed, the level of progression was classified as instruction given but maneuver not performed.

served no significant difference in the proportion of patients surviving to hospital discharge according to randomization status (12.5% for instructions to perform chest compression alone and 11.0% for instructions to perform chest compression plus rescue breathing, $P=0.31$) or the proportion surviving to discharge with a favorable neurologic status (14.4% for chest compression alone and 11.5% for chest compression plus rescue breathing, $P=0.13$) (Table 3).

SUBGROUP ANALYSES

The Breslow–Day test showed some evidence that the effect of the two sets of CPR instructions on outcomes differed according to the underlying cause of arrest ($P=0.007$ for return of pulse, $P=0.10$ for survival to discharge, and $P=0.06$ for survival with a favorable neurologic status) and presenting arrest rhythm ($P=0.14$, $P=0.09$, and $P=0.20$, respectively). (Tests for heterogeneity showed no evidence that the outcome differed according to whether the arrest was witnessed [$P>0.20$].) For example, among patients whose arrest had a cardiac cause, there was a trend toward an increased proportion of patients surviving to hospital discharge (15.5%, vs. 12.3% for patients with other causes of arrest; $P=0.09$) and an increased proportion surviving with a favorable neurologic status at discharge (18.9% vs. 13.5%,

$P=0.03$) with chest compression alone (Table 4). The survival rate among patients with a noncardiac cause of arrest was 5.0% with instructions to perform chest compression alone, as compared with 7.2% with instructions to perform chest compression plus rescue breathing ($P=0.29$).

In efficacy analyses restricted to patients for whom the intervention progressed to chest compression, the magnitude of outcome differences potentially favoring chest compression alone was typically larger than that observed in the effectiveness analyses (Tables 1 and 2 in the Supplementary Appendix).

DISCUSSION

In this multicenter, randomized trial, CPR instructions consisting of chest compression alone did not increase survival to hospital discharge overall, as compared with instructions consisting of chest compression plus rescue breathing. However, the results suggest that chest compression alone may increase survival among certain subgroups of patients — those with a cardiac cause of arrest and those with ventricular fibrillation.

The current trial was designed to acknowledge the heterogeneity of the arrest condition and the potential for disparate intervention effects across the arrest population, providing in turn the tru-

est translation of the intervention effects to community-based care.²²⁻²⁴ We found no significant difference between the two types of CPR instruction with respect to the proportion of patients who survived to hospital discharge. We did, however, observe a consistent trend toward clinically meaningful survival differences in favor of chest compression alone over chest compression plus rescue breathing among patients whose arrest was due to a cardiac cause (15.5% vs. 12.3%) and among those with a shockable arrest rhythm (31.9% vs. 25.7%). These findings in specific clinical groups are consistent with the results of investigations that have focused on the same subgroups of patients or have used corresponding animal models.^{10,11,18} One possible explanation is that the beneficial physiological effects of continuous chest compressions outweigh the beneficial physiological effects of chest compressions interspersed with rescue breathing.²⁵ Alternatively, rescue breathing attempted by bystanders may have no physiological effects, so the comparison is essentially between two strategies: continuous chest compressions and interrupted chest compressions.

We did not observe significant differences in outcome among the patients with noncardiac causes of arrest or nonshockable rhythms, although the proportion of patients who survived was greater in the group randomly assigned to chest compressions plus rescue breathing. Because these two (nonexclusive) subgroups accounted for 14.0% (32 of 227) and 21.1% (48 of 227) of survivors, respectively, they cannot be dismissed as clinically unimportant. One interpretation of these results is that the type of bystander CPR does not make a difference in these subgroups. Alternatively, one may speculate that the potential difference is consistent with the physiological understanding of rescue breathing and that the study was underpowered to rigorously evaluate the type of CPR in these subgroups.

Taken together, the potential differential effects of CPR with and without rescue breathing may support a more targeted application of type-specific CPR. On the basis of data from the current study, such a tailored approach, if correctly applied according to the cause of arrest, would theoretically result in 156 survivors with a favorable neurologic outcome per 1000 patients, as compared with 144 per 1000 if chest compression alone were used for all patients or 115 per

Outcome	All Sites				Two Sites Assessing Neurologic Status			
	Chest Compression Alone (N = 981)	Chest Compression plus Rescue Breathing (N = 960)	Absolute Difference (95% CI)†	P Value	Chest Compression Alone (N = 653)	Chest Compression plus Rescue Breathing (N = 633)	Absolute Difference (95% CI)†	P Value
	no. of patients/total no. (%)	no. of patients/total no. (%)	percentage points		no. of patients/total no. (%)	no. of patients/total no. (%)	percentage points	
Pulse present at end of EMS care	335/962 (34.8)	296/942 (31.4)	3.4 (-0.8 to 7.6)	0.12	279/653 (42.7)	234/633 (37.0)	5.8 (0.4 to 11.1)	0.04
Survival to hospital discharge	122/978 (12.5)	105/956 (11.0)	1.5 (-1.4 to 4.4)	0.31	110/653 (16.8)	93/633 (14.7)	2.1 (-1.8 to 6.1)	0.29
CPC 1 or 2 at hospital discharge‡	—	—	—	—	94/653 (14.4)	73/633 (11.5)	2.9 (-0.8 to 6.5)	0.13

Table 3. Outcomes.*

* CI denotes confidence interval, and EMS emergency medical services.

† The absolute difference in outcome between the two groups was derived by subtracting the value for the group assigned to chest compressions plus rescue breathing from the value for the group assigned to chest compressions alone.

‡ In the Cerebral Performance Category (CPC) classification, category 1 represents good cerebral performance, 2 moderate cerebral performance, 3 severe cerebral disability, 4 coma or vegetative state, and 5 death.

Table 4. Outcomes in Subgroups of Patients.*

Outcome	All Three Sites			Two Sites Assessing Neurologic Status			
	Chest Compression Alone (N = 981) no. of patients/total no. (%)	Chest Compression plus Rescue Breathing (N = 960) no. of patients/total no. (%)	Absolute Difference† (95% CI) percentage points	Compression Alone (N = 653) no. of patients/total no. (%)	Chest Compression plus Rescue Breathing (N = 633) no. of patients/total no. (%)	Absolute Difference† (95% CI) percentage points	P Value
Cause of arrest							
Cardiac							
Pulse present at end of EMS care	263/684 (38.5)	217/693 (31.3)	7.2 (2.1 to 12.1)	216/449 (48.1)	167/445 (37.5)	10.6 (4.1 to 16.9)	0.001
Survival to hospital discharge	108/697 (15.5)	87/705 (12.3)	3.2 (-0.5 to 6.8)	97/449 (21.6)	77/445 (17.3)	4.3 (-0.9 to 9.5)	0.10
CPC 1 or 2 at hospital discharge‡	—	—	—	85/449 (18.9)	60/445 (13.5)	5.4 (0.6 to 10.3)	0.03
Noncardiac							
Pulse present at end of EMS care	72/278 (25.9)	79/249 (31.7)	-5.8 (-13.5 to 1.9)	63/204 (30.9)	67/188 (35.6)	-4.7 (-14.0 to 4.5)	0.32
Survival to hospital discharge	14/281 (5.0)	18/251 (7.2)	-2.2 (-6.6 to 1.9)	13/204 (6.4)	16/188 (8.5)	-2.1 (-7.7 to 3.2)	0.42
CPC 1 or 2 at hospital discharge‡	—	—	—	9/204 (4.4)	13/188 (6.9)	-2.5 (-7.5 to 2.2)	0.28
Arrest rhythm							
Shockable							
Pulse present at end of EMS care	185/315 (58.7)	151/300 (50.3)	8.4 (0.5 to 16.1)	160/243 (65.8)	119/218 (54.6)	11.2 (2.3 to 20.0)	0.01
Survival to hospital discharge	101/317 (31.9)	78/304 (25.7)	6.2 (-0.09 to 13.2)	92/243 (37.9)	69/218 (31.7)	6.2 (-2.5 to 14.7)	0.16
CPC 1 or 2 at hospital discharge‡	—	—	—	80/243 (32.9)	56/218 (25.7)	7.2 (-1.1 to 15.4)	0.09
Nonshockable							
Pulse present at end of EMS care	150/647 (23.2)	145/642 (22.6)	0.6 (-4.0 to 5.2)	119/410 (29.0)	115/415 (27.7)	1.3 (-4.8 to 7.5)	0.68
Survival to hospital discharge	21/661 (3.2)	27/652 (4.1)	-0.9 (-3.1 to 1.1)	18/410 (4.4)	24/415 (5.8)	-1.4 (-4.5 to 1.7)	0.36
CPC 1 or 2 at hospital discharge‡	—	—	—	14/410 (3.4)	17/415 (4.1)	-0.7 (-3.4 to 2.0)	0.61
Witness status							
Arrest witnessed							
Pulse present at end of EMS care	195/411 (47.4)	178/429 (41.5)	5.9 (-0.8 to 12.6)	166/303 (54.8)	142/308 (46.1)	8.7 (0.8 to 16.5)	0.03
Survival to hospital discharge	88/416 (21.2)	78/437 (17.8)	3.4 (-2.0 to 8.6)	79/303 (26.1)	69/308 (22.4)	3.7 (-3.1 to 10.4)	0.29
CPC 1 or 2 at hospital discharge‡	—	—	—	70/303 (23.1)	54/308 (17.5)	5.6 (-0.8 to 11.9)	0.09
Arrest not witnessed							
Pulse present at end of EMS care	138/546 (25.3)	118/512 (23.0)	2.3 (-2.9 to 7.4)	111/345 (32.2)	92/324 (28.4)	3.8 (-3.2 to 10.7)	0.29
Survival to hospital discharge	33/556 (5.9)	27/517 (5.2)	0.7 (-2.1 to 3.5)	30/345 (8.7)	24/324 (7.4)	1.3 (-2.9 to 5.5)	0.54
CPC 1 or 2 at hospital discharge‡	—	—	—	23/345 (6.7)	19/324 (5.9)	0.8 (-3.0 to 4.6)	0.67

EMS response time among witnessed arrests												
≤6 Min												
Pulse present at end of EMS care	119/203 (58.6)	103/223 (46.2)	12.4 (2.9 to 21.6)	0.01	112/178 (62.9)	89/182 (48.9)	14.0 (3.8 to 23.9)	0.007				
Survival to hospital discharge	59/203 (29.1)	48/225 (21.3)	7.8 (-0.5 to 15.9)	0.07	56/178 (31.5)	44/182 (24.2)	7.3 (-2.0 to 16.4)	0.12				
CPC 1 or 2 at hospital discharge†	—	—	—	—	49/178 (27.5)	37/182 (20.3)	7.2 (-1.6 to 15.9)	0.11				
>6 Min												
Pulse present at end of EMS care	76/208 (36.5)	75/206 (36.4)	0.1 (-9.1 to 9.3)	0.98	54/125 (43.2)	53/126 (42.1)	1.1 (-11.0 to 13.2)	0.86				
Survival to hospital discharge	29/213 (13.6)	30/212 (14.2)	-0.6 (-7.2 to 6.1)	0.87	23/125 (18.4)	25/126 (19.8)	-1.4 (-11.2 to 8.3)	0.77				
CPC 1 or 2 at hospital discharge‡	—	—	—	—	21/125 (16.8)	17/126 (13.5)	3.3 (-5.7 to 12.3)	0.47				

* CI denotes confidence interval, CPC Cerebral Performance Category, and EMS emergency medical services.

† The absolute difference in outcome between the two groups was derived by subtracting the value for the group assigned to chest compressions plus rescue breathing from the value for the group assigned to chest compressions alone.

‡ In the Cerebral Performance Category classification, category 1 represents good cerebral performance; 2, moderate cerebral disability; 3, severe cerebral disability; 4, coma or vegetative state; and 5, death.

1000 if chest compression plus rescue breathing were used for all patients. Future investigation may consider whether straightforward, operational etiologic surrogates can facilitate type-specific CPR aimed at the underlying cause of arrest.

We also did not observe outcome differences overall when we evaluated neurologic status at discharge. This finding provides assurance that improved resuscitation with chest compression alone is not achieved at the cost of neurologic impairment. Indeed, there was some suggestion that the brain may derive specific benefit, given the increase in the magnitude of both the relative and absolute differences favoring chest compression alone over chest compression plus rescue breathing, as evident from the two contrasting outcomes — survival (16.8% and 14.7%, respectively) and survival with favorable neurologic status (14.4% and 11.5%) (Table 3). Because CPR has a host of effects, a brain-specific advantage related to chest compression alone may be plausible.²⁶

It is also useful to contrast the effectiveness and efficacy results in this study. The trial was an effectiveness study, since about one fourth of the patients did not progress to chest compressions. Conversely, three fourths did progress to chest compressions (the group constituting efficacy results) — a finding that underscores the important contribution a well-trained, assertive emergency dispatch program can make to increase bystander CPR. The magnitude of outcome differences potentially favoring chest compression alone was typically larger in the efficacy analysis as compared with the effectiveness analysis (Tables 1 and 2 in the Supplementary Appendix). One interpretation is that the efficacy associations better reflect the intervention's true physiological effects, suggesting that the potential benefit of chest compression alone is not due simply to a greater proportion of bystanders implementing chest compressions but may be due instead to the specific physiological effects of chest compression alone.

The current trial has limitations. The intervention randomized bystander CPR either to chest compressions alone or to chest compressions interspersed with rescue breathing in a ratio of 2 breaths to 15 compressions. This 2:15 ratio was the guideline specified during the first portion of the trial. One might expect that the results — and specifically the differences observed — would be attenuated if the ratio had been 2:30.

Such an inference is uncertain given the incomplete understanding of the mechanisms underlying the benefit of CPR and the fixed logistic considerations of incorporating rescue breathing.²⁷ We were able to assess progress through the study protocol, although we were not able to objectively and quantitatively measure the core components of the resuscitation maneuver (e.g., chest compression depth).

This investigation involved dispatcher-instructed CPR. The results do not apply to health professionals, who have a duty to respond and are more practiced and proficient in CPR, often engaging at a later stage of arrest physiology. Also, the results do not necessarily apply to bystanders who have been previously trained, are able to identify a cardiac arrest, and can provide CPR without dispatcher assistance. Nonetheless, CPR performed by lay responders trained in compression plus rescue breathing often falls short of the guideline standards during an actual cardiac arrest.²⁸

The optimal outcome measure incorporates both heart and brain resuscitation. Our study determined the neurologic status of survivors at two of the three trial sites. We do not know whether the distribution of neurologic status differed at the third site, although those who survived from the third site represent only about 10% of all the survivors.

Although nearly 2000 eligible patients were enrolled, the study may still be criticized for having insufficient power to detect clinically important differences. For example, the study would need approximately 4200 subjects to have 80% power to demonstrate a significant difference in survival with a favorable neurologic outcome between the group treated with chest compression alone and the group treated with chest compression plus rescue breathing (14.4% and 11.5%, respectively).

We used a 95% confidence interval to designate statistical significance, although multiple comparisons were performed. Thus, caution should be exercised when interpreting the results, since one might expect about 5% of comparisons to be

statistically significant simply by chance.²⁹ It is important to note that the subgroup analyses were all prespecified. Moreover, the pattern of results across subgroups is consistent with the scientific understanding of type-specific CPR mechanistic effects, so collectively these results may strengthen the interpretation.

The study's limitations should be balanced against its strengths. Cardiac arrest is a major public health challenge for which high-level evidence to guide care is lacking. Our trial was conducted in three different emergency medical systems, the intervention was randomized and was validated through audio review, the outcomes are clinically meaningful, and the design allowed for capture of a comprehensive study population so that translation of the results to the community can be reasonably gauged.

In conclusion, this randomized trial showed that dispatcher CPR instruction consisting of chest compression alone did not increase survival when compared with chest compression plus rescue breathing overall. However, there was a consistent trend toward meaningful outcome differences in favor of chest compression alone in key clinical subgroups (i.e., patients with a cardiac cause of arrest and patients with shockable rhythms). The results, viewed within the context of other investigations, strengthen a layperson CPR strategy that emphasizes chest compression and minimizes the role of rescue breathing.

Supported in part by grants from the Laerdal Foundation for Acute Medicine and the Medic One Foundation.

Drs. Rea and Eisenberg report receiving defibrillators and funding from Philips Medical Systems and Physio-Control to evaluate research questions related to automated external defibrillator training and use, and report that their institutions, the University of Washington and Public Health for Seattle and King County, have received funding from the Medtronic Foundation involving community-based translation of resuscitation science. Dr. Rea reports being a member of the American Heart Association Basic Life Support Committee. No other potential conflict of interest relevant to this article was reported.

Disclosure forms provided by the authors are available with the full text of this article at NEJM.org.

We thank the members of the data and safety monitoring board (James Christenson, Thomas Evans, Sylvia Feder, Peter Kudenchuk, and Charles Maynard), the EMS providers, and especially the emergency dispatchers in the study communities.

REFERENCES

- Nichol G, Thomas E, Callaway CW, et al. Regional variation in out-of-hospital cardiac arrest incidence and outcome. *JAMA* 2008;300:1423-31. [Erratum, *JAMA* 2008;300:1763.]
- Atwood C, Eisenberg MS, Herlitz J, Rea TD. Incidence of EMS-treated out-of-hospital cardiac arrest in Europe. *Resuscitation* 2005;67:75-80.
- Rea TD, Page RL. Community approaches to improve resuscitation following out-of-hospital sudden cardiac arrest. *Circulation* 2010;121:1134-40.
- Stiell I, Nichol G, Wells G, et al. Health-related quality of life is better for

- cardiac arrest survivors who received citizen cardiopulmonary resuscitation. *Circulation* 2003;108:1939-44.
5. Rea TD, Eisenberg MS, Culley LL, Becker L. Dispatcher assisted cardiopulmonary resuscitation and survival in cardiac arrest. *Circulation* 2001;104:2513-6.
 6. Kouwenhoven WB, Jude JR, Knickerbocker GG. Closed-chest cardiac massage. *JAMA* 1960;173:94-7.
 7. Sayre MR, Berg RA, Cave DM, Page RL, Potts J, White RD. Hands-only (compression-only) cardiopulmonary resuscitation: a call to action for bystander response to adults who experience out-of-hospital sudden cardiac arrest: a science advisory for the public from the American Heart Association Emergency Cardiovascular Care Committee. *Circulation* 2008;117:2162-7.
 8. Locke CJ, Berg RA, Sanders AB, et al. Bystander cardiopulmonary resuscitation: concerns about mouth-to-mouth contact. *Arch Intern Med* 1995;155:938-43.
 9. Williams JG, Brice JH, De Maio VJ, Jalbuena T. A simulation trial of traditional dispatcher-assisted CPR versus compressions-only dispatcher-assisted CPR. *Prehosp Emerg Care* 2006;10:247-53.
 10. Ewy GA, Zuercher M, Hilwig RW, et al. Improved neurological outcome with continuous chest compressions compared with 30:2 compressions-to-ventilations cardiopulmonary resuscitation in a realistic swine model of out-of-hospital cardiac arrest. *Circulation* 2007;116:2525-30.
 11. Kern KB, Hilwig RW, Berg RA, Sanders AB, Ewy GA. Importance of continuous chest compressions during cardiopulmonary resuscitation: improved outcome during a simulated single lay-rescuer scenario. *Circulation* 2002;105:645-9.
 12. Berg RA. Role of mouth-to-mouth rescue breathing in bystander cardiopulmonary resuscitation for asphyxial cardiac arrest. *Crit Care Med* 2000;28:Suppl:N193-N195.
 13. Paredes VL, Rea TD, Eisenberg MS, et al. Out-of-hospital care of critical drug overdoses involving cardiac arrest. *Acad Emerg Med* 2004;11:71-4.
 14. Bohm K, Rosenqvist M, Herlitz J, Hollenberg J, Svensson L. Survival is similar after standard treatment and chest compression only in out-of-hospital bystander cardiopulmonary resuscitation. *Circulation* 2007;116:2908-12.
 15. Iwami T, Kawamura T, Hiraide A, et al. Effectiveness of bystander-initiated cardiac-only resuscitation for patients with out-of-hospital cardiac arrest. *Circulation* 2007;116:2900-7.
 16. Weisfeldt ML, Becker LB. Resuscitation after cardiac arrest: a 3-phase time-sensitive model. *JAMA* 2002;288:3035-8.
 17. SOS-KANTO Study Group. Cardiopulmonary resuscitation by bystanders with chest compression only (SOS-KANTO): an observational study. *Lancet* 2007;369:920-6.
 18. Hallstrom A, Cobb L, Johnson E, Copass M. Cardiopulmonary resuscitation by chest compression alone or with mouth-to-mouth ventilation. *N Engl J Med* 2000;342:1546-53.
 19. White L, Rogers J, Bloomingdale M, et al. Dispatcher assisted cardiopulmonary resuscitation — risks for patients not in cardiac arrest. *Circulation* 2010;121:91-7.
 20. Young GB. Neurologic prognosis after cardiac arrest. *N Engl J Med* 2009;361:605-11.
 21. Jacobs I, Nadkarni V, Bahr J, et al. Cardiac arrest and cardiopulmonary resuscitation outcome reports: update and simplification of the Utstein templates for resuscitation registries: a statement for healthcare professionals from a task force of the International Liaison Committee on Resuscitation (American Heart Association, European Resuscitation Council, Australian Resuscitation Council, New Zealand Resuscitation Council, Heart and Stroke Foundation of Canada, InterAmerican Heart Foundation, Resuscitation Councils of Southern Africa). *Circulation* 2004;110:3385-97.
 22. Steen PA. Does active rescuer rescue breathing have a place during basic cardiopulmonary resuscitation? *Circulation* 2007;116:2514-6. [Erratum, *Circulation* 2008;117(3):e20.]
 23. Mercer SL, DeVinney BJ, Fine LJ, Green LW, Dougherty D. Study designs for effectiveness and translation research: identifying trade-offs. *Am J Prev Med* 2007;33:139-54.
 24. Tunis SR, Stryer DB, Clancy CM. Practical clinical trials: increasing the value of clinical research for decision making in clinical and health policy. *JAMA* 2003;290:1624-32.
 25. Ramaraj R, Ewy GA. Rationale for continuous chest compression cardiopulmonary resuscitation. *Heart* 2009;95:1978-82.
 26. Rea TD, Cook AJ, Hallstrom A. CPR during ischemia and reperfusion: a model for survival benefits. *Resuscitation* 2008;77:6-9.
 27. Hauff SR, Rea TD, Culley LL, Kerry F, Becker L, Eisenberg MS. Factors impeding dispatcher-assisted telephone cardiopulmonary resuscitation. *Ann Emerg Med* 2003;42:731-7.
 28. Rea TD, Stickney RE, Doherty A, Lank P. Performance of chest compressions by laypersons during the Public Access Defibrillation Trial. *Resuscitation* 2010;81:293-6.
 29. Wang R, Lagakos SW, Ware JH, Hunter DJ, Drazen JM. Statistics in medicine — reporting of subgroup analyses in clinical trials. *N Engl J Med* 2007;357:2189-94.

Copyright © 2010 Massachusetts Medical Society.

APPLY FOR JOBS ELECTRONICALLY AT THE NEJM CAREERCENTER

Physicians registered at the NEJM CareerCenter can apply for jobs electronically using their own cover letters and CVs. You can keep track of your job-application history with a personal account that is created when you register with the CareerCenter and apply for jobs seen online at our Web site. Visit NEJMjobs.org for more information.

Reproduced with permission of the copyright owner. Further reproduction prohibited without permission.